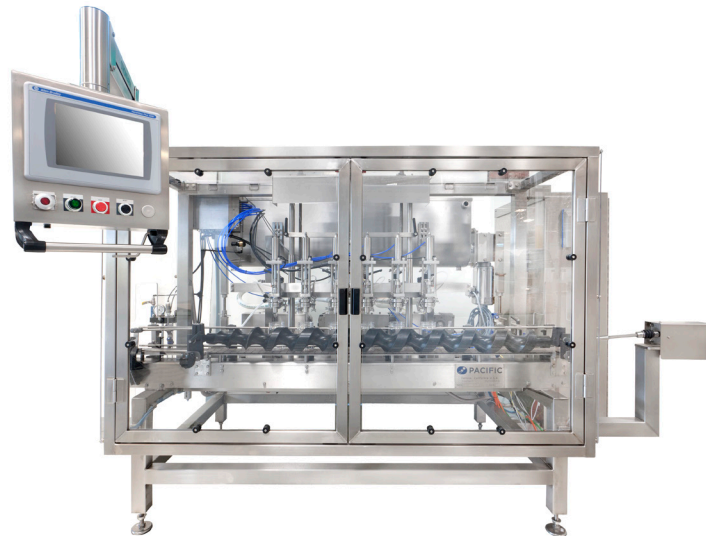




F&C

FILLING & CAPPING

INLINE FILLERS VOLUMETRIC PUMP



Inline Volumetric Pump Filling System Designed For Light to Semi-Viscous Food and Non-Food Products

Pacific is recognized as an industry leader for inline fillers for food and non-food products. Pacific inline volumetric pump fillers require no change parts and they accommodate a wide range of container types and sizes. They are designed and built for liquid filling environments and stainless steel construction with NEMA 4X electrical enclosures are standard.

Pacific volumetric pump fillers use proven and dependable servo powered positive displacement pumps to deliver fill accuracies of $\pm 0.5\%$. Pacific's volumetric pump filling systems offer superior performance, higher fill accuracy, flexibility across product viscosity and lower maintenance than piston filling systems. This technology along with hundreds of filling nozzle designs each for specific applications have established Pacific as a industry leader for lower speed inline filler environments.

Pacific filling systems are designed and manufactured by ProMach Filling Systems in Corona, CA. Aftermarket parts support for Pacific fillers is provided from the Corona facility and technical support is provided by the Corona, CA facility as well as the Waukesha, WI location.

FEATURES AND BENEFITS

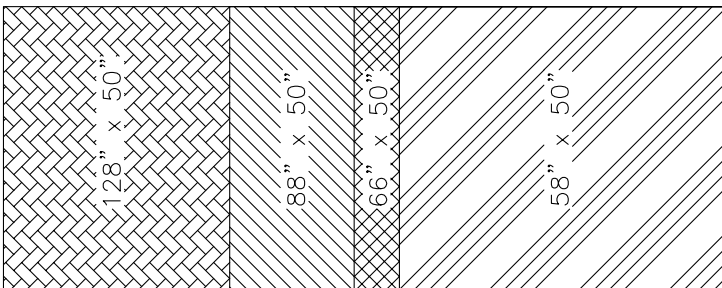
- **Size range** - Containers from 8 oz. (236 mL) to 128 oz. (3.78 L)
- **Speed range** - Steady-state speeds from 1 cpm to up to 80 cpm
- **Wide product range** - Light to viscous products with or without particulates
- **Highly accurate, consistent filling** - Fill volume accuracy $\pm 0.5\%$; no product give-away from worn pistons
- **Tool-less size changeovers** - Size changeovers require no tools to complete
- **Optional infeed timing screw** - Provides precise container spacing, eliminating need to adjust fill nozzle positions during changeovers
- **Four fill nozzle configurations** - bottom-up, true top fill, below the neck top fill and diving nozzle
- **Simple fill volume adjustments** - Fill volume adjustments completed via pump speed changes executed through the HMI; no mechanical adjustments required
- **Wash down design** - NEMA 4X electrical enclosures and stainless steel construction for all wetted parts are ideal for liquid filling environments

TYPICAL PRODUCT SPECIFICATIONS

Standard Frame Sizes (L x W ")	58" (147 cm) x 50" (127 cm)	66" (168 cm) x 50" (127 cm)	88" (223 cm) x 50" (127 cm)	128" (325 cm) x 50" (127 cm)
Frame Construction	304 Stainless			
# Filling Valves	2 - 4	4 - 6	6 - 8	10 - 12
Speeds (Up To)	40 cpm	60 cpm	70 cpm	80 cpm
Container Size Range	8 oz. (236 mL) to 128 oz. (3.78 L)			
Controls	Allen-Bradley			
Utility Requirements - Air	80 - 100 PSI 5 - 7 CFM			
Electrical	240 - 480 VAC 3ph / 60 hz			

CONFIGURATION

All Pacific inline fillers have a frame depth of 50" (127 cm) and are available in four different frame lengths. The frame length options are 128" (325 cm), 88" (223 cm), 66" (168 cm) and 58" (147 cm).



Dimensions are in inches

OPTIONS

- Low fill detection rejection
- Swing arm HMI
- Siemens controls
- Stainless steel top plate over deck with gutters and drain for CIP fluid capture
- Servo-controlled bottom-up fill nozzle positioning
- Jacketed stainless steel tanks, mixing systems and level controls
- Zero-drip filling nozzles with zero drip configuration
- Semi-automatic external CIP system
- Automated internal CIP system and CIP rings
- Customer specified electrical service
- ZPI line performance monitoring & analysis system
- Servo driven timing screw and change parts for quick setup
- Special pumps for corrosive or chunky products
- Spare parts kits